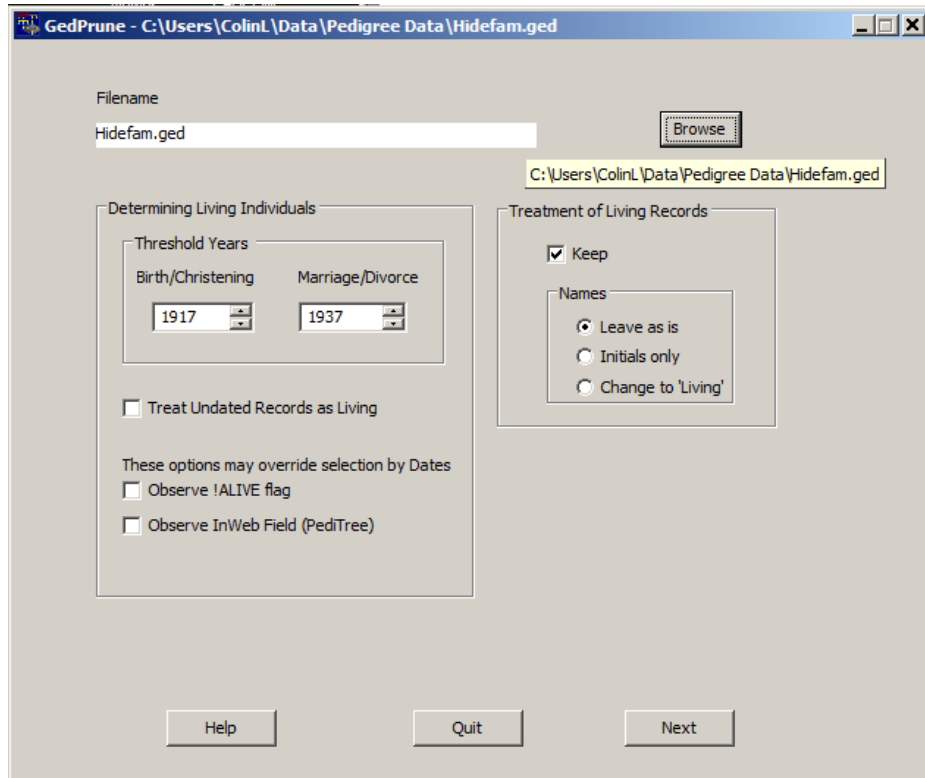


Description of GedPrune

Introduction

GedPrune is a utility program that removes information about living persons from a GEDCOM file.



Main Window

After you have chosen the GEDCOM file to be processed, it first scans this file to determine which individuals are living. This determination is made initially upon information in the file, according to parameters you can adjust.

You are then presented with a list of the living individuals, alongside a list of all other individuals in the file. Facilities are provided to move individuals between these two lists, if required.

Once satisfied with the contents of these lists, the file is processed either to omit the records of living individuals, or to remove details from these records, both individual and family.

The resulting GEDCOM file has the same name as the original; a back-up copy of the original is saved, in case you wish to repeat the process with different parameters.

Choosing the GEDCOM File

To choose the GEDCOM file to be processed, click on the **Browse** button. This will display a standard File Open dialogue that enables you to select your file. On first use, this will display the c:\pedigree folder; you can navigate to another if required. When you select your file, the current folder will be remembered for the next use of GedPrune.

If there is a previous version of the chosen file, then a warning message to that effect will be shown. You then have three choices:-

- Remove the previous version - click **No**.
- Replace the chosen file with the previous version - click **Yes**.
- Do nothing — click **Cancel**. In this case, you will be unable to complete the pruning process.

Identifying Living Individuals

During the initial scan of the GEDCOM file, the individuals that are to be treated as alive are identified. The conditions used to make this identification are:-

No death or burial recorded

AND

A birth or christening recorded on or after the Threshold Year set for Birth/Christening.

OR

A marriage or divorce recorded on or after the Threshold Year set for Marriage/Divorce.

OR (optionally)

No relevant dates (birth/christening; death/burial; marriage/divorce) present in the record.

OR (optionally, forcing status=living if present)

The tag `!ALIVE` present at the start of a Note in the record.

The GEDCOM tag `INWE` with value `N` present (used in PediTree to exclude this person from Web-page output).

On completion of the scan, a list of the living individuals is displayed opposite a list of all the other individuals in the file. Facilities are provided to move individuals between these two lists.

Operating Parameters

GedPrune's initial display include some parameters affecting its operation that you can alter if you wish. Any change you make will be remembered for subsequent use of GedPrune.

Determining Living Individuals

Threshold Years

Used when identifying living individuals, these two years can be adjusted as you decide, either using the spin-buttons or by typing in the wanted value. Initially these are set to 1917 and 1937.

GedPrune Help

Options

Three options may be selected if desired (default: not selected):-

- Treat undated records as living.
- Observe !ALIVE flag in Notes.
- Observe InWeb field (PediTree).

Treatment of Living Individuals

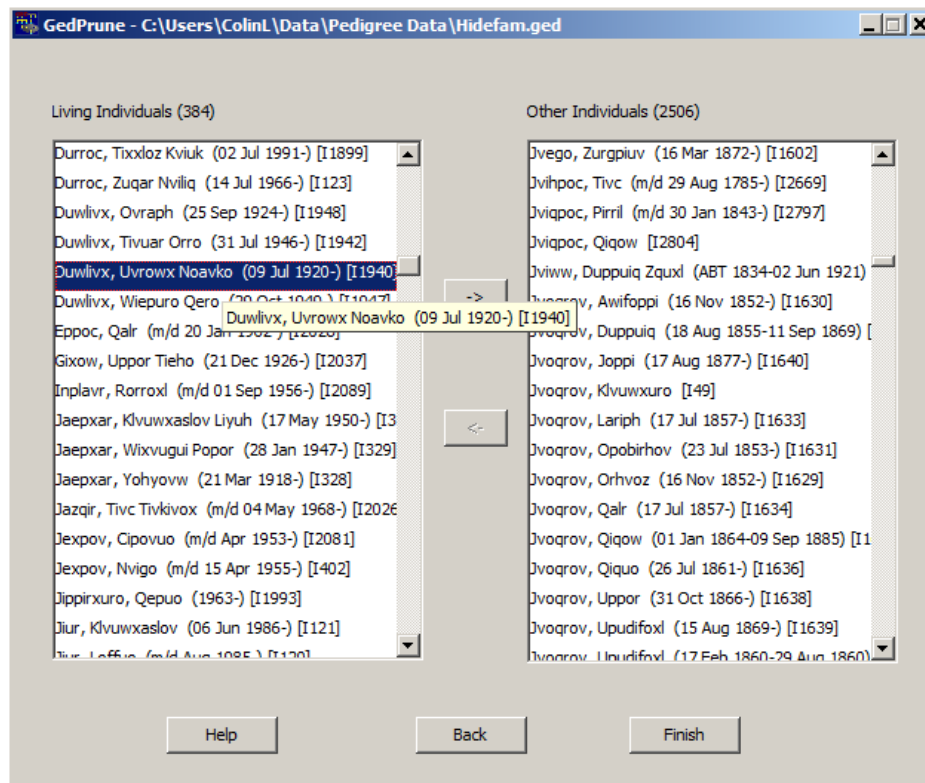
The first option is whether or not to keep the records of living individuals. The default setting is to keep these records.

If they are not to be kept, then they are omitted, as are any links to them. In addition, any Family records that then have no members, either parents or children, are likewise omitted.

If keeping the records, then you have three choices of how living individuals names are treated when pruning the records. These are: leave them unchanged; reduce them to initials only; replace them by 'Living - details withheld'.

Reviewing the Selection

Two lists display the result of selecting living individuals. Both lists are in alphabetic order by surname, forenames and have dates (where available) and the GEDCOM cross-reference related to their record-number. Some long names may overflow the column width; hovering the mouse over them will display the full text (as shown below). (The information in this image comes from a file in which the names have been deliberately disguised.)



The Lists

The dates may be birth/christening and death/burial, e.g. (1875–1931) or (1920–). Alternatively, a marriage or divorce date, shown as, e.g. (m/d 1941).

If desired, you can move individuals between the lists, in order to correct a perceived mislocation. Click on an individual to select them; the corresponding move button will become active. Click on that to move the individual to the other list.

The results of any such moves are not remembered after the **Finish** button is clicked. Neither are they preserved if you use the **Back** button to alter the settings and re-run the scan.

Pruning the Records

Once you have approved the list of living individuals, the final step is to process the file and prune information from those records, or remove them if you have chosen to do so.

Keeping Records of Living Individuals

All information is removed from the records of living individuals, except for the Sex, Name and family links (to their parents and their own family or families). There are three options for the treatment of their name:-

- Leave them unchanged.
- Reduce them to initials only.
- Replace them by the words `Living - details withheld`

In the first two cases, a Note `Living Person - details withheld` is added to the record.

Family records in which one or both of the parents are living are also pruned. All details except for the links to parent(s) and children are removed, a note being added:
`Living spouse(s) - details withheld`.

All other records in the file are left unchanged.

Not Keeping Records of Living Individuals

If your choice is not to keep the records of living individuals, then they are omitted. Any Family records that are left with no linked individuals are also omitted.

Where other records have links to Person and Family records omitted, these links are omitted.

Saving the Original File

On completion of processing, the chosen input file is replaced by the pruned version and the original file is saved as a back-up copy. For example, if you choose file `foobar.ged`, then the pruned result will be in a new file `foobar.ged`. The original file will be saved as `foobar.gbk`.

Should the file `foobar.gbk` already exist, then it will not be replaced: the pruned version will be named `foobar.tmp` and a warning message will be displayed.

Author and Acknowledgments

GedPrune has been written by Colin Liebenrood for Pedigree Software. His contact details are given in the program's built-in help.

Acknowledgments

Development and distribution of this utility have been made possible by freely available software. We acknowledge the invaluable facilities of

Free Pascal and the Lazarus IDE/Libraries for this implementation.

Inno Setup for the Installer.

Using GedPrune

First Steps

First, select the file to be processed by clicking **Browse**. The name of the chosen file will appear in the Filename box, with its full pathname in the program title-bar.

Review the settings of the parameters for **Determining Living Individuals** and **Treatment of Living Records** and adjust if desired. Click **Next** to scan the file and review the result.

Review the List and Finish

You are presented with lists of the Living and Other individuals, where you can check the selection of the living and alter it if wished. If you think a different setting of Threshold dates or other choices might help, click **Back** to return to the previous display and make your alteration. Again clicking **Next** will allow you to see the result.

Finally, click **Finish** to process the file, pruning it as required. You are returned to the opening display, ready to process another file.